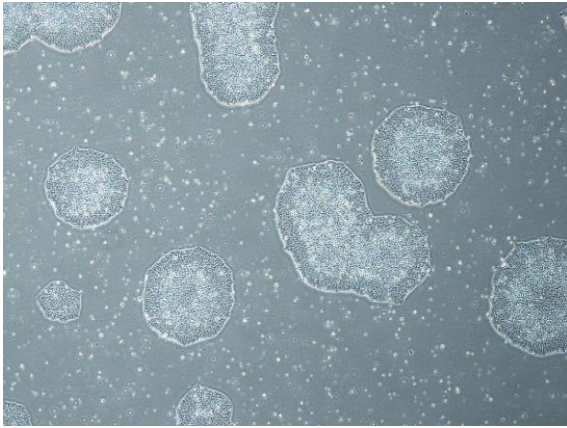
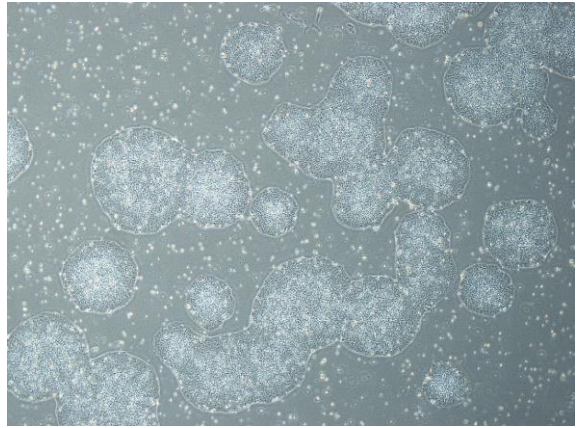


【 CiRA-j-1373 】 Morphology of iPSC colonies

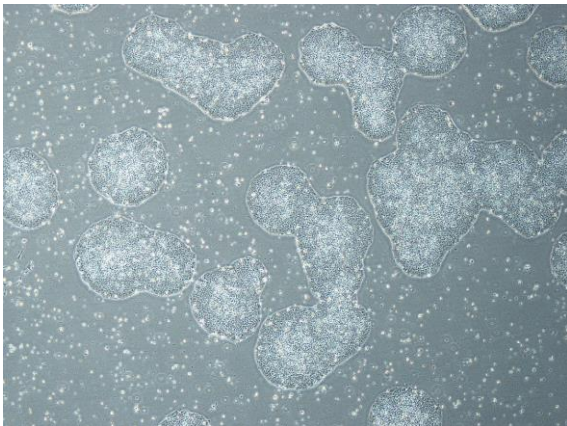
CiRA-j-1373-A: passage-3



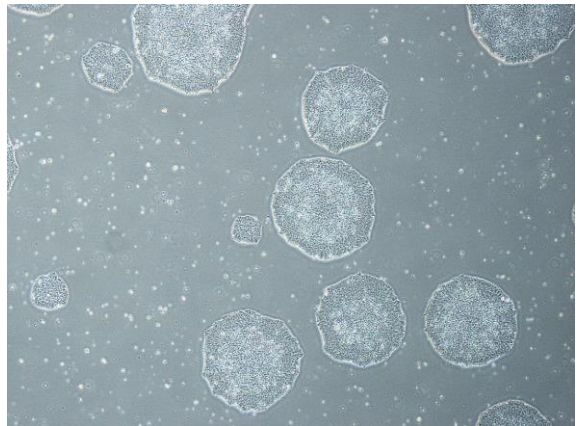
CiRA-j-1373-B: passage-3



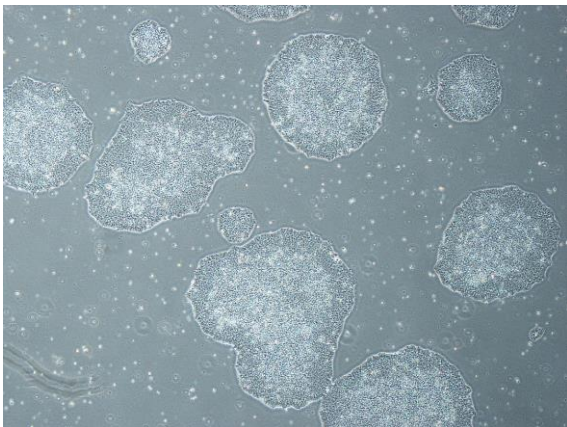
CiRA-j-1373-C: passage-3



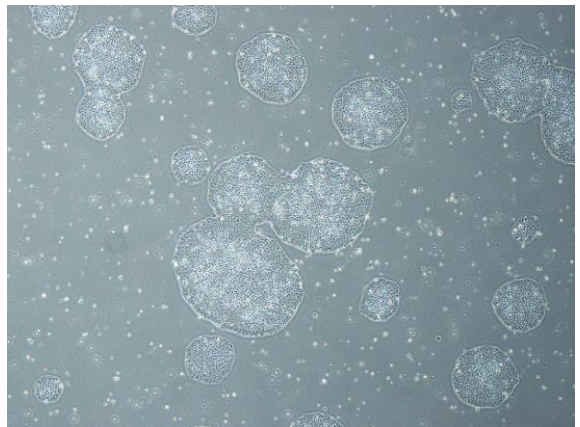
CiRA-j-1373-D: passage-3



CiRA-j-1373-E: passage-3



CiRA-j-1373-F: passage-3



(All images were captured at 4x magnification)